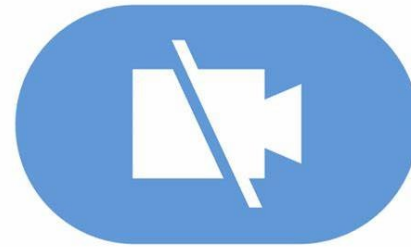


# University of Antwerp



# Welcome!



University  
of Antwerp

# Any questions?

- ☑ Post them in the chat **during the webinar**
- ☑ Post them in the chat during the Q&A at the end of the webinar
- ☑ Submit very specific questions to the **Helpdesk for International Students**



**12 February 2021**

**How to apply to the**

**University of Antwerp**

**Starter kit**



**University  
of Antwerp**

1. Introduction
2. Why choose UAntwerp
3. Admission requirements
4. Application procedure
5. Mobility Online
6. Application deadlines
7. Tuition fees
8. Scholarships
9. Helpdesk for International Students
10. Q&A

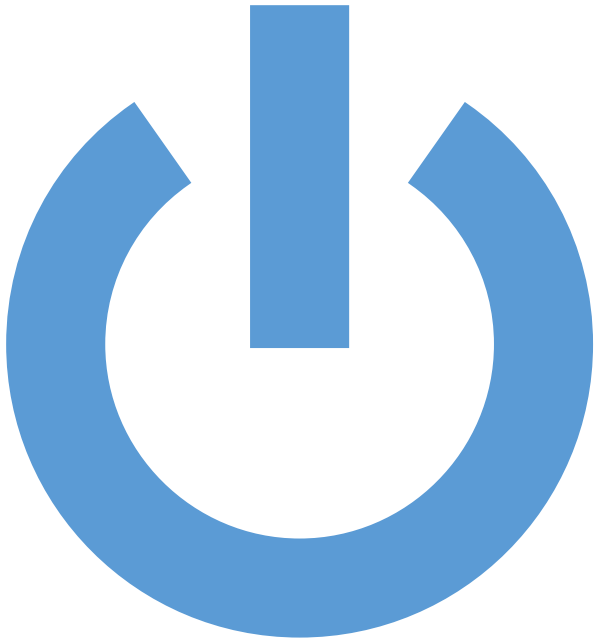




**This is UAntwerp >>>>>**

**UNIVERSITY  
OF  
ANTWERP**

## Before we start...



- This webinar is about **international applications**
- This webinar addresses those who must apply through our online application tool  
**Mobility Online**
- This webinar does **NOT** elaborate on our **education offer**



University  
of Antwerp



# 1. Introduction



# Your hosts today



**Marnix**



**Mieke**



**University  
of Antwerp**

**International Students Office**



## **2. Why choose UAntwerp**



University  
of Antwerp

**...located in an innovative, vibrant  
business city**

**...in the historical, trendy  
heart of Europe**



**University  
of Antwerp**

...with several  
rankings and accreditations



**Let's shape the future together**



**University  
of Antwerp**



# Welcome to UAntwerp!

- ❑ Partner in the prestigious YUFE Alliance
- ❑ International-oriented
- ❑ Excellent in education and international research
- ❑ Innovative and interdisciplinary approach
- ❑ Strong in research with social impact
- ❑ Lab of the City of Antwerp



University  
of Antwerp



# Study in English?

## Master programmes

- Applied Economic Sciences: Economic Policy
- Biology: Biodiversity, Conservation and Restoration
- Biology: Global Change Biology
- Biomedical Sciences: Neurosciences
- Biomedical Sciences: Infectious and Tropical Diseases
- Business Economics
- Chemistry
- Computer Science
- Electronics and ICT Engineering Technology
- Epidemiology
- Laws
- Linguistics
- Linguistics and Literature
- Marine and Lacustrine Science and Management
- Molecular Biology
- Philosophy (Research Master)
- Physics
- Political Science
- Rehabilitation Sciences and Physiotherapy: Internal Conditions
- Rehabilitation Sciences and Physiotherapy: Neurological Conditions

## Bachelor programmes

- Social-economic Sciences



**University  
of Antwerp**



# Study in English?

## Advanced Master programmes

- Development Evaluation and Management
- Global Health
- Globalisation and Development
- Governance and Development
- Maritime and Air Transport Management
- Water Sustainability (Think Water)

## Postgraduate programmes

- Algology
- China-EU Cultural Curatorship Studies
- Energy and Climate

## Erasmus Mundus programmes

- Leading International Vaccinology Education (LIVE)
- Applied Ecohydrology



**University  
of Antwerp**

# Study in Dutch?

- 33 **Bachelor** programmes
- 78 **Master** programmes
- 13 **Advanced Master** programmes
- 40 **Bridging** programmes
- 30 **Preparatory** programmes
- 8 **Teaching training** programmes
- 21 **Postgraduate** programmes

- Preparatory one-year programme: **Dutch as a Foreign Language in an Academic Context** (Linguapolis)



University  
of Antwerp

# More than studying

- Experience culture
- Enjoy our food
- Keep fit with Uantwerp plus pass
- Experience student life
- Improve your language skills





### **3. Admission requirements**

To enrol in an **Academic Bachelor**, a **Master**, an **Advanced Master** or a **Postgraduate** programme at the University of Antwerp

- ✓ You must meet our **admission requirements**
  - Diploma requirements
  - Requirements concerning Legalisation of official documents
  - Language requirements
  - Additional criteria
- ✓ During the admission procedure it will be examined if you meet these requirements. The procedure is started by submitting your application through our online application tool **Mobility Online**

## ❑ NOT through Mobility Online:

- ✓ Applications for **Postgraduate** programmes
- ✓ Applications for Bachelor's programmes based upon a **secondary degree issued in an EEA member state** \*
- ✓ Applications for some **specific programmes**: Erasmus Mundus programmes, Maritime and Air Transport Management, Marine and Lacustrine Science and Management
- ✓ Applications for Master's programmes based upon a **Bachelor's degree issued in Belgium, the Netherlands or Luxembourg**

## ❑ ALWAYS through Mobility Online:

- ✓ All **other situations**
- ✓ Candidates that require a **student visa**

**\* Check on our website whether your secondary qualification fulfils this requirement!**

## □ Diploma requirements

<b>Bachelor</b>	<ul style="list-style-type: none"><li>• <b>Secondary education degree</b> (at least)</li><li>• Allowing you <b>at least</b> to enrol in a comparable programme in a university in the country where the degree was issued</li></ul>
<b>Master</b>	<ul style="list-style-type: none"><li>• <b>Academic Bachelor degree</b> (at least)</li><li>• Equivalent to the relevant Flemish Bachelor's degree</li></ul>
<b>Advanced Master</b>	<ul style="list-style-type: none"><li>• <b>Master degree</b></li><li>• Equivalent to the relevant Flemish Master's degree</li></ul>

# ❑ Legalisation of official documents

- ✓ Required if your supporting official documents (including degree certificates and sworn translations) **have not been issued by a Belgian authority**
- ✓ During legalisation the origin of a document, the genuineness of a signature, the capacity of the signer and, if applicable, the authenticity of the stamp or the seal on the document are **verified**
- ✓ Check the UAntwerp website and/or the website of the **Belgian Ministry of Foreign Affairs** for the latest information on legalization matters and for the exact procedure you must follow





## □ Language requirements

- ✓ Most of our Bachelor, Master, Advanced Master and Postgraduate programmes are offered in **Dutch**
- ✓ 1 Bachelor programme is offered in **English**
- ✓ 20 Master, 6 Advanced Master, 2 Erasmus Mundus Master programmes and 3 Postgraduate programmes are offered in **English**

# □ Language requirements

English programmes	Dutch programmes
<ul style="list-style-type: none"><li>• Test of English as a Foreign Language (TOEFL) <b>OR</b></li><li>• International English Language Testing System (IELTS) <b>OR</b></li><li>• Interuniversity Test of Academic English for Students (ITACE) <b>OR</b></li><li>• Proof of <b>one-year successful study</b> in English Bachelor or Master programme (60 ECTS credits)</li></ul>	<ul style="list-style-type: none"><li>• Interuniversitaire Taaltest Nederlands voor Anderstaligen (ITNA) <b>OR</b></li><li>• Certificaat Nederlands als Vreemde Taal <b>OR</b></li><li>• Staatsexamen Nederlands als tweede taal (NT2) <b>OR</b></li><li>• Proof of <b>one-year successful</b> study in Dutch at a secondary school, university college or university (60 ECTS credits)</li></ul>



## □ Language requirements

- ✓ For each test, overall and/or specific **level requirements** apply
- ✓ Always check our **website** for the specific language requirements of the programme of your interest
- ✓ Dutch proficiency certificates cannot be older than **2 years**

For TOEFL and IELTS, you must nominate the University of Antwerp as a **valid recipient** of the test scores



# Study Dutch?

- Preparatory one-year programme: **Dutch as a Foreign Language in an Academic Context**
- At **Linguapolis**, language institute of UAntwerp
- Application through **Mobility Online**
- If **visa** needed, apply for the programme of your interest. During this application, your eligibility to start the Dutch prepyear will also be examined
- €4355 for EEA students and €5915 for non-EEA students, **€2000 of which must be paid in advance when the application is submitted**



**University  
of Antwerp**

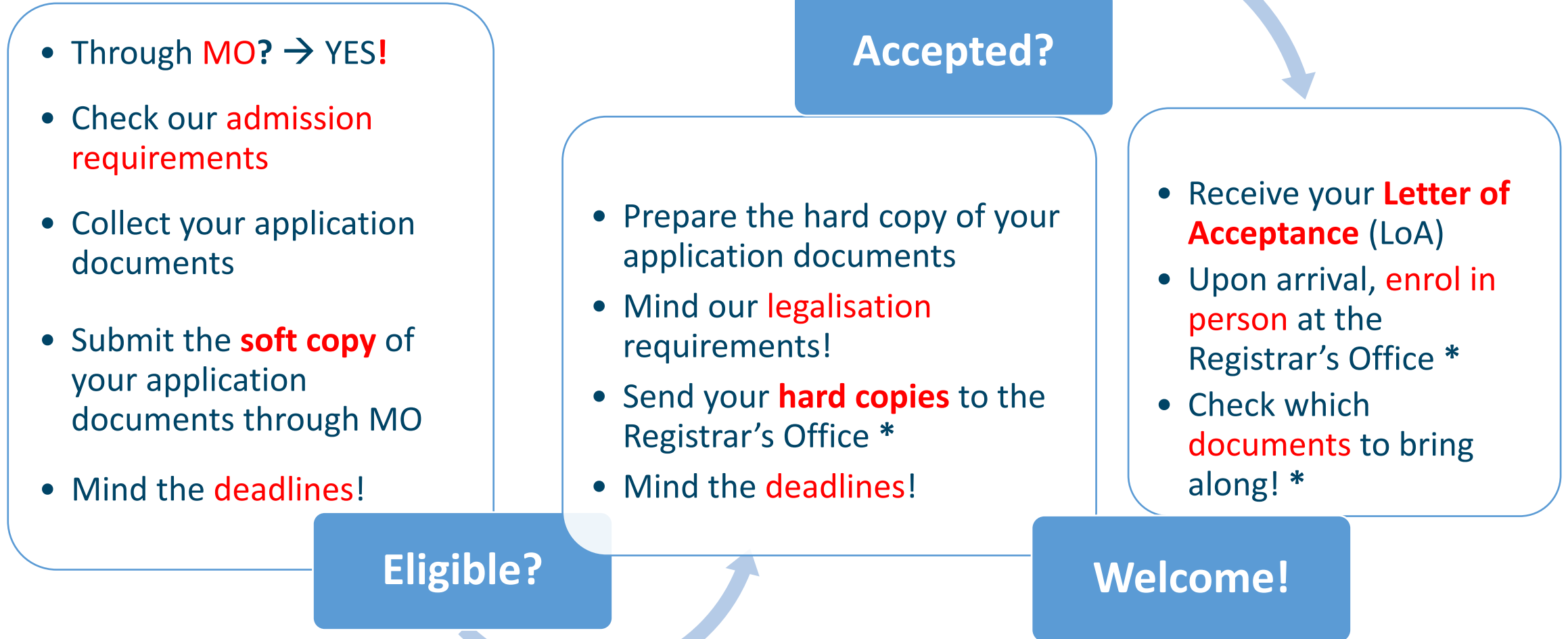
## □ Additional requirements

<b>Bachelor of Medicine</b>	<ul style="list-style-type: none"><li>• Compulsory doctor's <b>Entrance Exam</b> in Dutch</li><li>• Binding outcome</li></ul>
<b>Bachelor of Veterinary Medicine</b> <b>Bachelor of Engineering Technology</b>	<ul style="list-style-type: none"><li>• Compulsory <b>Ijkingstoets</b> in Dutch</li><li>• Outcome is not binding</li></ul>
<b>Chinese students</b>	<ul style="list-style-type: none"><li>• Compulsory <b>Akademische Prüfstelle (APS)</b></li></ul>



## **4. Application procedure**

# □ Application procedure





Once submitted, your application file follows these steps:

- ❑ Step 1: Screening on **content** and **level** through the **soft copies** of your documents
- ❑ Step 2: Screening of your **language proficiency** document(s)
- ❑ Step 3: Screening on **authenticity** of your **hard copy** documents

The combined evaluation results of all steps determine if your application is accepted or not

- ✓ You get a **Letter of Acceptance** (LoA)!
- ✗ You are informed about the reason of the **rejection**

# ❑ Step 1: Screening on content and level

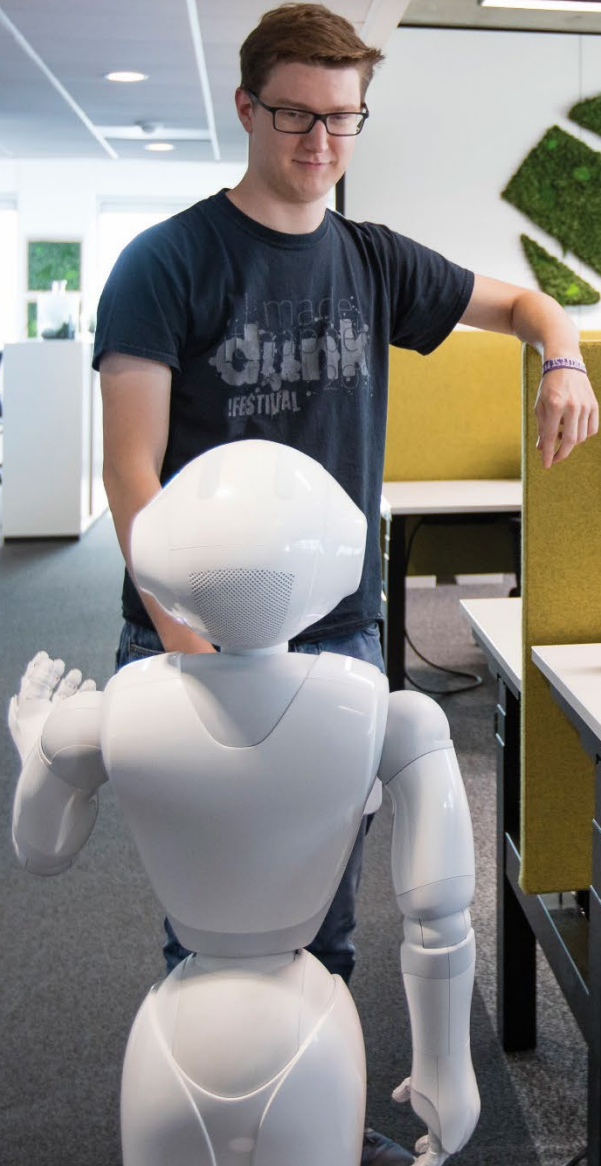
- ✓ The Admission Board screens your **educational background** and your **motivation** to determine your access to the programme
- ✓ This process takes up to **6 weeks** after uploading the soft copies of your application

## ❑ Step 2: Screening of language proficiency

- ✓ Your **language proficiency** is checked
- ✓ The submitted **proof of your language proficiency** is evaluated to see if it meets the requirements

## ❑ Step 3: Screening on authenticity of hard copy documents

- ✓ The Registrar's Office screens the submitted **hard copies** of your documents and verifies the **authenticity** of your degree
- ✓ If needed, your **previous educational institution(s)** is (are) contacted
- ✓ This process takes up to **4 weeks**





## **5. Mobility Online**

A photograph of three young men sitting on a grassy lawn in front of a stone building. The man on the left is wearing sunglasses and a light-colored shirt. The man in the middle is wearing a dark polo shirt. The man on the right is wearing a white polo shirt and glasses. They are all looking towards the right side of the frame. In the background, other people are sitting on the lawn, and a large stone building with many windows is visible.

# MOBILITY ONLINE

A user guide for your application



## **6. Application deadlines**



## ❑ Application deadlines

- ✓ Application deadlines are **similar** for Bachelor, Master and Advanced Master programmes
- ✓ Application deadlines **differ** for EEA and non-EEA nationals

# ❑ Application deadlines 2021-2022

Action	Non-EEA nationals	EEA nationals
Upload your <b>soft copies</b> in Mobility Online	<b>Before 1 March 2021</b>	<b>Before 15 May 2021</b>
Send your <b>hard copies</b> to the Registrar's Office	<b>Before 31 May 2021</b>	<b>Before 15 June 2021</b>

**Non-EEA nationals with a valid Belgian long-term residence permit follow the EEA deadlines**



**University  
of Antwerp**



## **7. Tuition fees**

# □ Tuition fees

## **Bachelor and Master programmes EEA nationals**

Standard fee:

- ✓ €247.9 + €11.9 per credit
- ✓ €961.9 for 60 credits

## **Bachelor programmes Non-EEA nationals**

Standard fee:

- ✓ €400 + €45 per credit or €3100 for 60 credits
- ✓ No reduced tuition fee

## **Master programmes Non-EEA nationals**

Increased fee:

- ✓ €400 + €90 per credit or €5800 for 60 credits

Tuition fee reduction:

- ✓ €400 + €45 per credit or €3100 for 60 credits

# □ Tuition fees

## English Advanced Master programmes

### Water Sustainability: Integrating Technology- and Nature-based Solutions

Standard fee:

- ✓ €250 + €45 per credit

Tuition fee reduction:

- ✓ €400 + €45 per credit

### Globalisation and Development Governance and Development Development Evaluation and Management

Student without scholarship:

- ✓ Standard: €2150
- ✓ Tuition fee reduction: €1250 \*

Student with scholarship:

- ✓ ICP/BTC scholarship: €962.9
- ✓ Other scholarship: €5150



**University  
of Antwerp**

\* After selection by IOB

# Tuition fees

## Tuition fee reduction

The University of Antwerp offers tuition fee reductions as a form of **scholarship** to international students with **demonstrated academic excellence**

- ✓ Fee reduction only applicable to students who need to pay the increased tuition fees
- ✓ To be eligible for fee reduction, the applicant must at least meet all of the following criteria:
  - does not yet have a master degree
  - has no other scholarship
  - has a high standard of academic performance



University  
of Antwerp

❑ **EEA = European Economic Area**

❑ **EEA member states**

Austria, Belgium, Bulgaria, Croatia, Cyprus, Czech Republic, Denmark, Estonia, Finland, France, Germany, Greece, Hungary, Iceland, Ireland, Italy, Latvia, Liechtenstein, Lithuania, Luxemburg, Malta, The Netherlands, Norway, Poland, Portugal, Romania, Slovenia, Slovakia, Spain and Sweden



**University  
of Antwerp**



## **8. Scholarships**



# □ Scholarships

- **Master Mind**

The Flemish Ministry of Education awards scholarships to **outstanding students** for Master programmes

- **VLUHR - UOS**

VLIR-UOS awards scholarships to students from 33 scholarship countries in **Africa, Asia and Latin America** to take a Master programme in Flanders. The eligible Master programmes are taught in English

- **Tuition fee reduction**

For international students with **demonstrated academic excellence**. Applicable to specific study programmes after screening by the Admission Board




## **9. Helpdesk for International Students**


# ☐ Helpdesk for International Students

- ✓ For questions related to **applications** and **admissions**
- ✓ Submit a **ticket**
- ✓ The **Registrar`s Office** responds to your ticket as soon as possible
- ✓ Take into consideration that questions are dealt with **during office hours**

Search help:

 **Information regarding requests for certificates and/or the completion of forms**

If you have a request for a study certificate and/or if you want a form completed, active UAntwerp students should always use their UAntwerp email address when starting a ticket. Others should in this case include a copy of their passport.

 **Submission of enrolment file**

Only use the category "Submit enrolment file" to submit an enrolment file.

Use other categories for more general questions about enrolment and programmes.

**[Submit a ticket](#)**

Submit a new issue to a department

**[View existing ticket](#)**

View tickets you submitted in the past

**[Nederlandstalige helpdesken](#)** Overzicht van Nederlandstalige helpdesken (faculteiten en centrale onderwijsadministratie)

# 10. Questions?



University  
of Antwerp

# Contact

For questions related to <b>application and admission</b>	<b>Registrar's Office</b> <b>Helpdesk for International Students</b>
For questions related to the <b>content</b> of the programmes	<b>Faculties</b>
For <b>general</b> questions	<b>International Students Office</b> <a href="mailto:Internationalstudents@uantwerp.be">Internationalstudents@uantwerp.be</a>

